



STARHOTELS®
PREMIUM

Majestic
TORINO

Majestic

TORINO

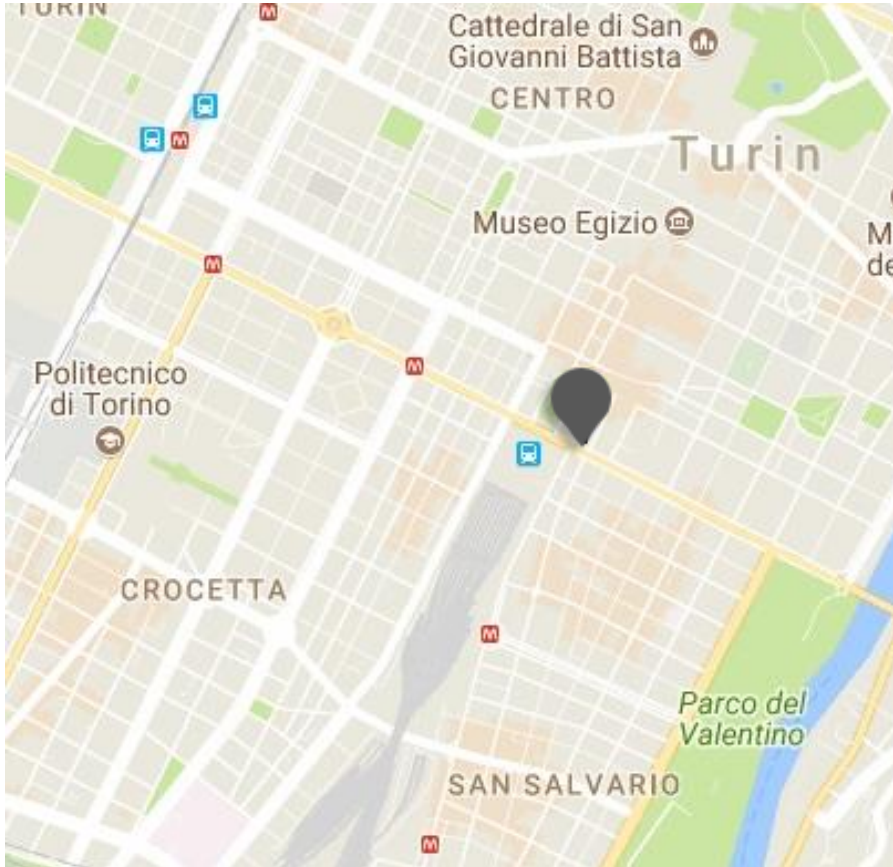


A stylish tradition

Every inch of the Majestic, from its grand nineteenth-century mansion location to its thoughtful interior touches, lives up to its name. Standing opposite the Porta Nuova railway station, the Majestic is your personal palace in the heart of Torino. From the Liberty skylight and crystal chandelier above the restaurant to the refined style of the recently refurbished rooms, the hotel is rich in turn-of-the-century glamour and contemporary comfort. What's more, with ten conference rooms for over 1.000 delegates in total, we're the largest business hotel in Torino and are sure to create events with impact.

Majestic

TORINO



Location

In front of the Porta Nuova Railway Station, a few steps away from the historical centre and the most important artistic sites of the city

Distances

Railway station: Km 0,1

Highway: Km 5

Airport: Caselle Km 27

Corso Vittorio Emanuele II, 54 - 10123 Torino - ITALY

T +39 011 539153 F +39 011 534963

majestic.to@starhotels.it

starhotels.com

Majestic

TORINO

Restaurant & Bar

Enjoy international cuisine and local dishes under the beautiful Liberty skylight in our Le Regine restaurant by Eataly, or relaxing drinks in our traditional bar, Il Circolo by Eataly.

Piedmontese cuisine dressed to the nines. Traditional recipes alternate with contemporary culinary creations in a kaleidoscope of flavors, aromas and colors which represent the finest of Italian food.



Majestic

TORINO



161 Rooms

- 67 Classic
- 9 Classic Single
- 61 Superior
- 13 Executive
- 9 Junior Suite
- 2 Suite

Spacious and comfortable, our 161 rooms and suites, recently renovated, are perfect for both business and leisure guests.





Meetings & Events

Meeting rooms: 10

Capacity (theatre style): 484 max

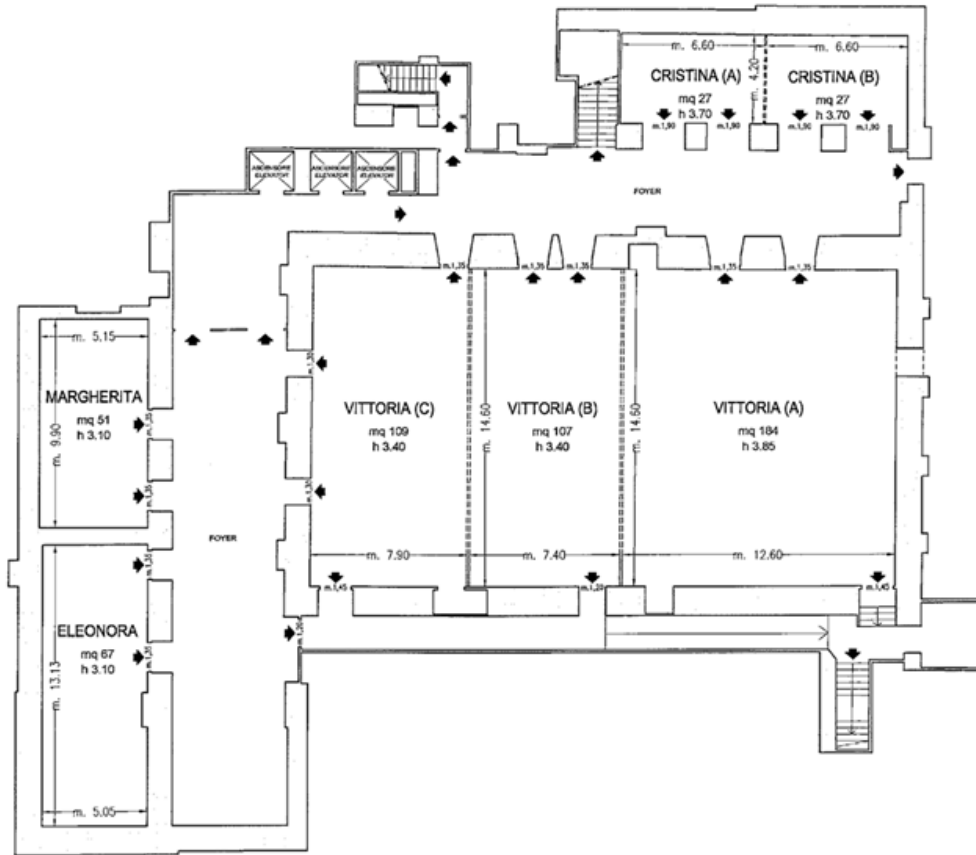
Our 10 meeting rooms have recently been completely renovated.

With the help of a personalized service from the Events Manager, we can adapt every element – from the lighting and seating plans to the technology – to create the perfect setting for your meeting, conference or special event in Turin.

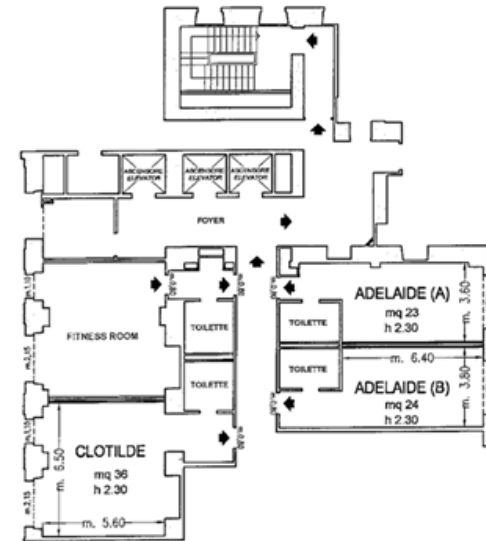


Majestic

TORINO



Piano -1 / Basement



Piano Primo / First Floor

◆ Uscite di sicurezza / Emergency Exits

--- Finestre / Windows

▬▬▬▬▬ Pareti mobili / Modular Walls

□ Colonne / Columns

10 meeting room fino a 484 persone/ 10 meeting rooms up to 484 seats

Majestic

TORINO

Meeting rooms	Area mq / ft.	L x W mt. / ft.	Height mt. / ft.	Theatre	Class room	Conference table/ U-shape	Cabaret style^
Vittoria (A)	184 1979,84	12,60x14,60 41,34x47,90	3,85 12,63	140	70	40	48
Vittoria (B)	107 1151,32	14,60x7,40 47,90x24,28	3,4 11,15	80	50	30	30
Vittoria (C)	109 1172,84	14,60x7,90 47,90x25,92	3,4 11,15	90	50	30	30
(A+B+C)	400 4304	27,40x14,60 89,89x47,90	3,40-3,85 11,15-12,63	484	200	80	114
(A+B)	292 3141,92	20,00x14,60 65,62x47,90	3,40-3,85 11,15-12,63	250	130	60	84
(B+C)	218 2345,68	14,80x14,60 48,56x47,90	3,4 11,15	200	100	60	66
Eleonora	67 720,92	13,13x5,05 43,08x16,57	3,1 10,17	50	30	30	-
Margherita	51 548,76	9,90x5,15 32,48x16,90	3,1 10,17	25	15	15	-
Studio Clotilde°	36 387,36	6,50x5,60 21,33x18,37	2,3 7,55	-	-	10	-
Cristina (A)	27 290,52	6,60x4,20 21,65x13,78	3,7 12,14	-	-	12	-
Cristina (B)	27 290,52	6,60x4,20 21,65x13,78	3,7 12,14	-	-	12	-
Cristina (A+B)	55 591,8	13,30x4,20 43,64x13,78	3,7 12,14	40	20	20	-
Studio Adelaide (A)°	23 247,48	3,60x6,40 11,81x21,00	2,3 7,55	-	-	9	-
Studio Adelaide (B)°	24 258,24	3,80x6,40 12,47x21,00	2,3 7,55	-	-	9	-
Le Regine Restaurant°	294 3163,44	11,50x25,60 37,73x83,99	-	-	-	-	-
Il Circolo Bar°	-	8,00x10,00 26,25x32,81	-	-	-	-	-